



SEAT POST
SPECIAL ADAPTER
USER MANUAL



English

SIT'N'GO

- PAG. 2 Assembly instructions
- PAG. 4 Assembly the saddle
- PAG. 5 Saddle positioning
- PAG. 8 Saddle pre-adjustment
- PAG. 8 Micro adjustment

SIT'N'GO SPECIAL ADAPTER FOR ANY SADDLE TYPE

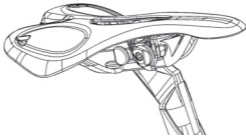
- PAG. 14 Saddle assembly
- PAG. 20 Saddle positioning

WARRANTY

- PAG. 22 Periodic maintenance
- PAG. 23 Warranty limits



ITM SIT'N'GO SADDLE SYSTEM USER MANUAL



Thank you for choosing ITM Sit'n'Go Saddle System, a product that will guarantee performance and safety over time. Please pay attention to all instructions provided, and follow them carefully.



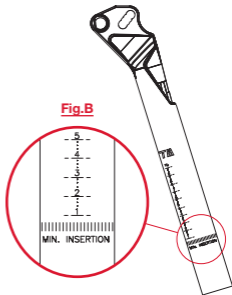


ASSEMBLY INSTRUCTIONS

- Check the diameter of the seat-post tube against the diameter of the seat tube on your frame, a difference over 0.15mm could be dangerous.
- Do not apply grease while assembling carbon seat posts.
- Apply a small amount of grease while assembling aluminum seat posts.
- Follow the instructions relating the seat post tightening torque indicated on the part itself.
- An excessive tightening torque can cause serious safety problems.

! WARNING!

- Do not exceed the insertion limit while fitting your frame inside the seat tube (**Fig.B**).
- Do not over-tighten the seat-post screws or the clamp screws.



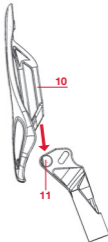


ASSEMBLING THE SADDLE

OPERATIONS

- The saddle can be assembled either before or after the positioning of the seat post on the bicycle
- Pre-assembly operations: insert the rail (10) into the pin (11) (Fig.D)

Fig.D



SADDLE POSITIONING

- Move the saddle horizontally until it reaches the holes **(13)** on the seat-post head **(Fig.E)**. The four holes permit the pre-positioning (macro-regulation) of the saddle. Choose which hole best fits your frame angle according to the position and, most of all, to the seat-tube angle of your frame.

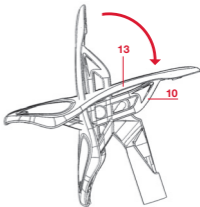
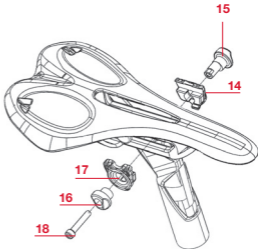


Fig.E



- Position the rail close to the chosen hole, then insert the flanges and the pivots (15-14-16-17) as shown in **Fig.C**, making sure that the left part (14-15) fit perfectly inserted into the right one (16-17).

**Fig.C**



SADDLE PRE-ADJUSTMENT

- Slightly tighten the bolt **(18)** making it possible for the saddle to adjust through forward/backward movement of the rail, following the millimeter scale on the rail **(Fig.F e Fig.G)**.

MICRO ADJUSTMENT

- Once reached the desired position, manually rotate the pivot/handle **(16)** **(Fig.F e Fig.G)**, to incline the saddle upwards or downwards through micro regulation.

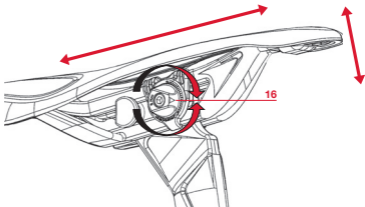


Fig.F



- After rechecking the saddle positioning (both inclination and forward/backward movement) tight the bolt for the definitive torque **(18)**, paying attention to what has
- been written above for the tightening torque.

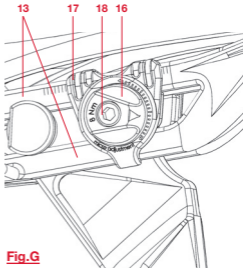


Fig.G

 **WARNING!**

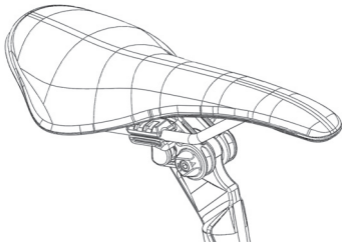
Incorrect tightening can cause undesired movement of the seat and consequential physical injuries. Over-tightening can cause undesired damages that are not due to the product itself.



SIT'N'GO SPECIAL ADAPTER FOR ANY SADDLE TYPE

ENGLISH

12



Sit'n'Go saddle system is provided with a special adapter that permits any type of saddle of different brands to benefit from the patented SIT'N'GO system. Indeed any standard saddle with its own fork can be assembled on SIT'N'GO system and it can benefit from its microadjustment.

For this purpose please follow carefully the instruction below.





SADDLE ASSEMBLY

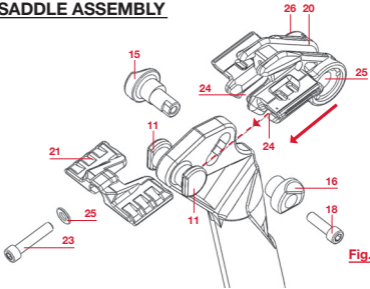
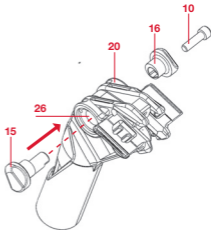


Fig.1

- Insert the adapter's (20) slots (24) in the seat-post's (Fig. I) pivot. Rotating the adapter (20) (see instruction above). Insert pivot (15) into one selected hole (13) making sure that the pivot is positioned in the right place (26) (Fig. L).

**Fig.L**



- Secondly, **(Fig. M)** insert the eccentric **(16)** in its right place **(25)**, taking care to pair-fit the pivot **(15)** with the eccentric **(16)** (see instruction above).

Insert the screw **(18)** into the eccentric **(16)** by tightening without completely pressing it **(Fig N)**. Manually rotate the eccentric **(16)** to make sure that the adapter **(20)** can incline to both directions **(Fig. O)**.

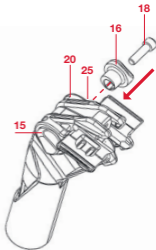
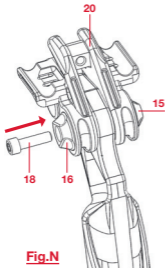
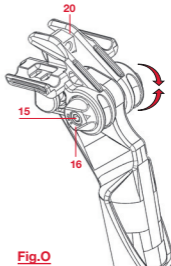
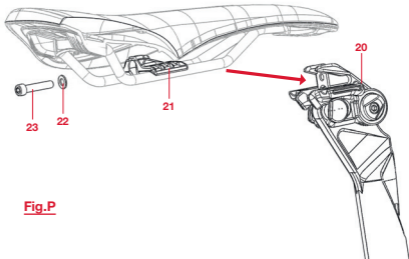


Fig.M

**Fig.N****Fig.O**



- Take your saddle and position your clamp **(21)** on the saddle rail (between the saddle frame and the rail) **(Fig. P)**. Position the saddle and clamp **(21)** in the adapter **(Fig. P)**.

**Fig.P**



SADDLE POSITIONING


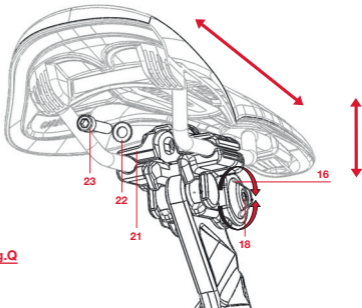
- Insert the lock washer (22) and the screw (23) into the clamp's ring (21) and tighten without completely pressing. Regulate the saddle lengthwise for the forward/backward movement and acting on the eccentric (16) find the best saddle inclination (Fig. Q). Completely lock off the screws (18 and 23), following the torque instruction written on the piece.
-  **WARNING!**
Incorrect locking of the screw, can cause undesired movement and damage of the saddle, of the seat-post and of their components.

Fig.Q



PERIODIC MAINTENANCE

- Check the seat post regularly: if you notice any sign of damage, replace the damaged parts immediately.
- Check regularly the correct tightening torque of the seat-post clamp and the bolt **(18 and 23)**.
- In case any sign or crack of the seat post, the fork or the saddle, do not use the product and immediately address your trusted mechanic.
- Periodically wash the product thoroughly using detergents available on the market that do not contain abrasives or solvents.

WARRANTY LIMITS

- The final decision to repair or substitute the defective items covered by warranty is on discretion of ITM. It is the user's responsibility to check periodically the product to determine whether it is necessary to contact ITM service center.
- Claim under this warranty must be made through an authorized dealer. Together with the warranty card, a proof of purchase is required.





NOT COVERED BY WARRANTY

- products modified, not correctly used.
- products not correctly assembled or repaired.
- products damaged by the use of other materials or assembled by unskilled personnel.
- products used in competitions, on acrobatic races or during exhibitions.
- aesthetical finishes.
- average wear and tear of time.
- cost of labor for assembling/disassembling.
- shipment cost.

